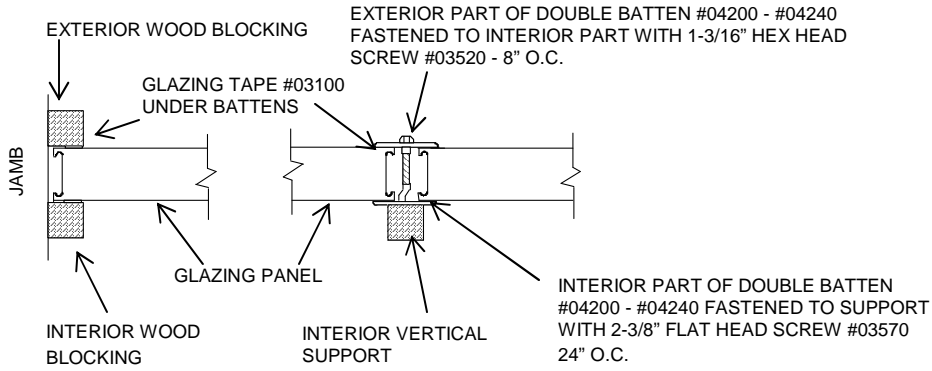
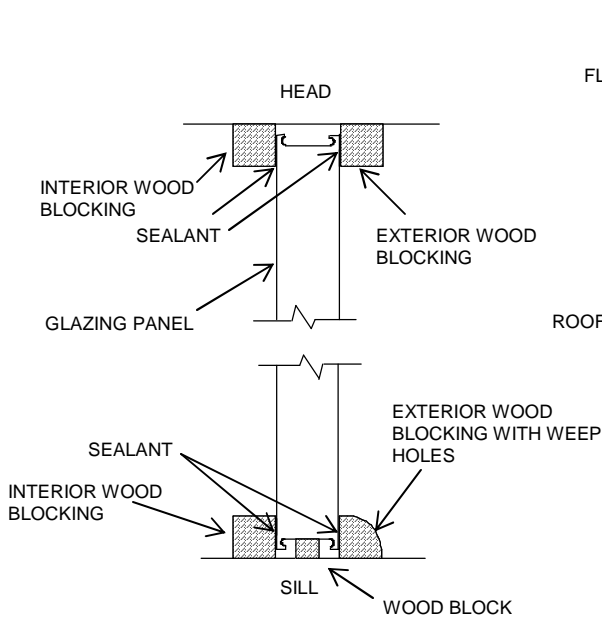


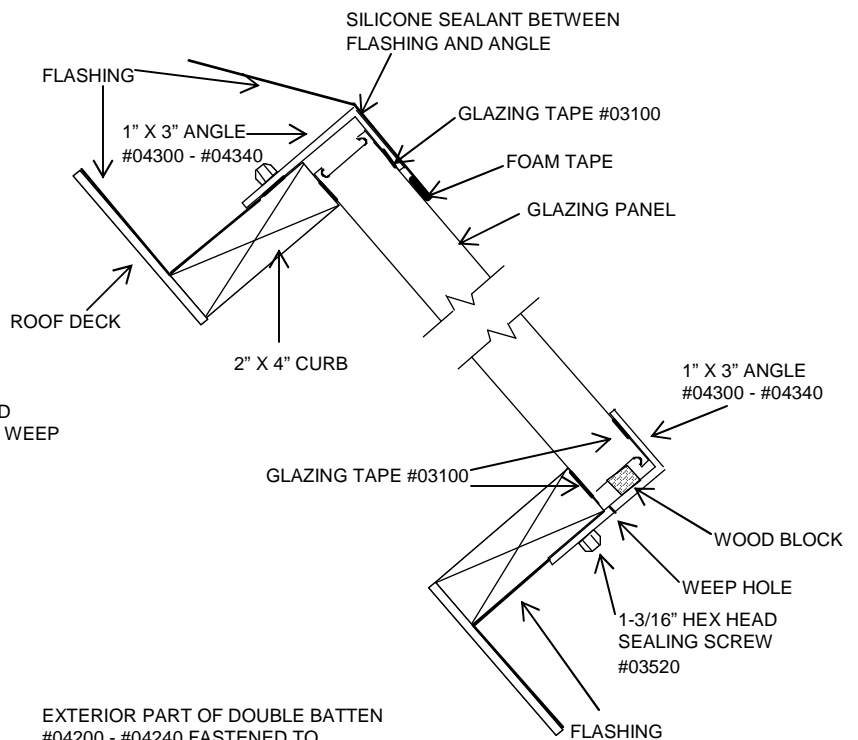
SUGGESTED GLAZING DETAILS



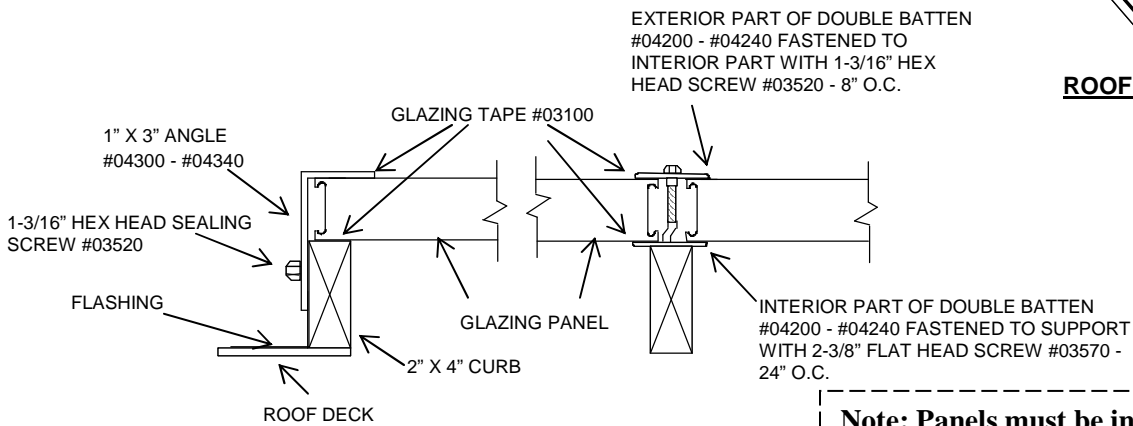
WALL DETAIL – TOP VIEW



WALL DETAIL – SIDE VIEW



ROOF DETAIL – SIDE VIEW



ROOF DETAIL – BOTTOM VIEW

Note: Panels must be installed with in and out and top and bottom in proper orientation. See stamp on side of each panel.

Note: Do not use horizontal joints for roof applications!

1/2" to 5/8" spacing must be allowed between panels for thermal expansion. A flexible sealant should also be used where the panel is in contact with other materials and parts of the building to ensure a weatherproof installation. To prevent the condensation build-up between panels and aluminum closure angles, weep holes (1/8" diameter) should be drilled in the lower 1" x 3" angle. Two weep holes per panel are sufficient.